

Warwickshire Waste Partnership

26 June 2012

Full Year Estimated Waste and Recycling Data

Recommendation

That the Waste Partnership notes the provisional waste and recycling data – at Disposal and Collection Authority level – for the 4th quarter, January to March 2012, and the full year's estimates.

- 1.1 This report contains a mixture of data taken from Waste Data Flow and from Warwickshire County Council in-house records and, at the publication of this report, are considered **provisional estimates**.
- 1.2 The figures should be treated as provisional as data may be changed until all authorities' data is approved by the Environment Agency and the Department for Environment, Food and Rural Affairs (DEFRA) through the Waste Data Flow System.

Provisional Waste Management Data Quarter 4 2011/12

Figures are taken from Warwickshire County Council in-house records and, at the publication of this report, are considered **provisional estimates**.

1.0 Total Municipal Waste Arising and Disposal Route (Tonnes)

	January	February	March	Q4 Total	Q3 Total
Total Tonnes	20,778	18,117	23,140	62,035	59,912
Landfilled	8,697	7,811	8,207	24,715	22,288
Inert - Landfilled	309	289	650	1,248	1,336
Energy from Waste	3,744	2,305	2,857	8,906	8,914
Other Technology*	0	0	0	0	551
In-vessel Composting*	1,554	1,324	2,020	4,898	8,036
Windrow Composting*	945	813	2,251	4,009	3,379
Other Composting*	287	302	357	946	728
Recycling (HWRC)	1,220	953	1,228	3,401	2,981
Recycling (WCA)	3,972	4,018	5,077	13,067	11,405
Reuse	50	302	493	845	324

*Other Technology – Refuse Derived Fuel

*Windrow composting – Outdoor composting of green garden waste from HWRCs, NBBC and NWBC

*In Vessel composting – Indoor controlled composting of garden and food waste from RBC, WDC, SDC

*Other composting – Chipboard and wood

2.0 Percentage of Waste by Disposal Route

	January	February	March	Q4 Total	Q3 Total
% Recycling	25.0%	27.4%	27.2%	26.5%	24.0%
% Composting	13.4%	13.5%	20%	15.9%	20.2%
% Reuse	0.2%	1.7%	2.2%	1.4%	0.5%
Total	38.6%	42.6%	49.4%	43.6%	44.7%

% Landfill	43.4%	44.7%	38.3%	41.9%	39.4%
% Energy from Waste and RDF	18%	12.7%	12.3%	14.5%	15.9%
Total	61.4%	57.4%	50.6%	56.4%	55.3%

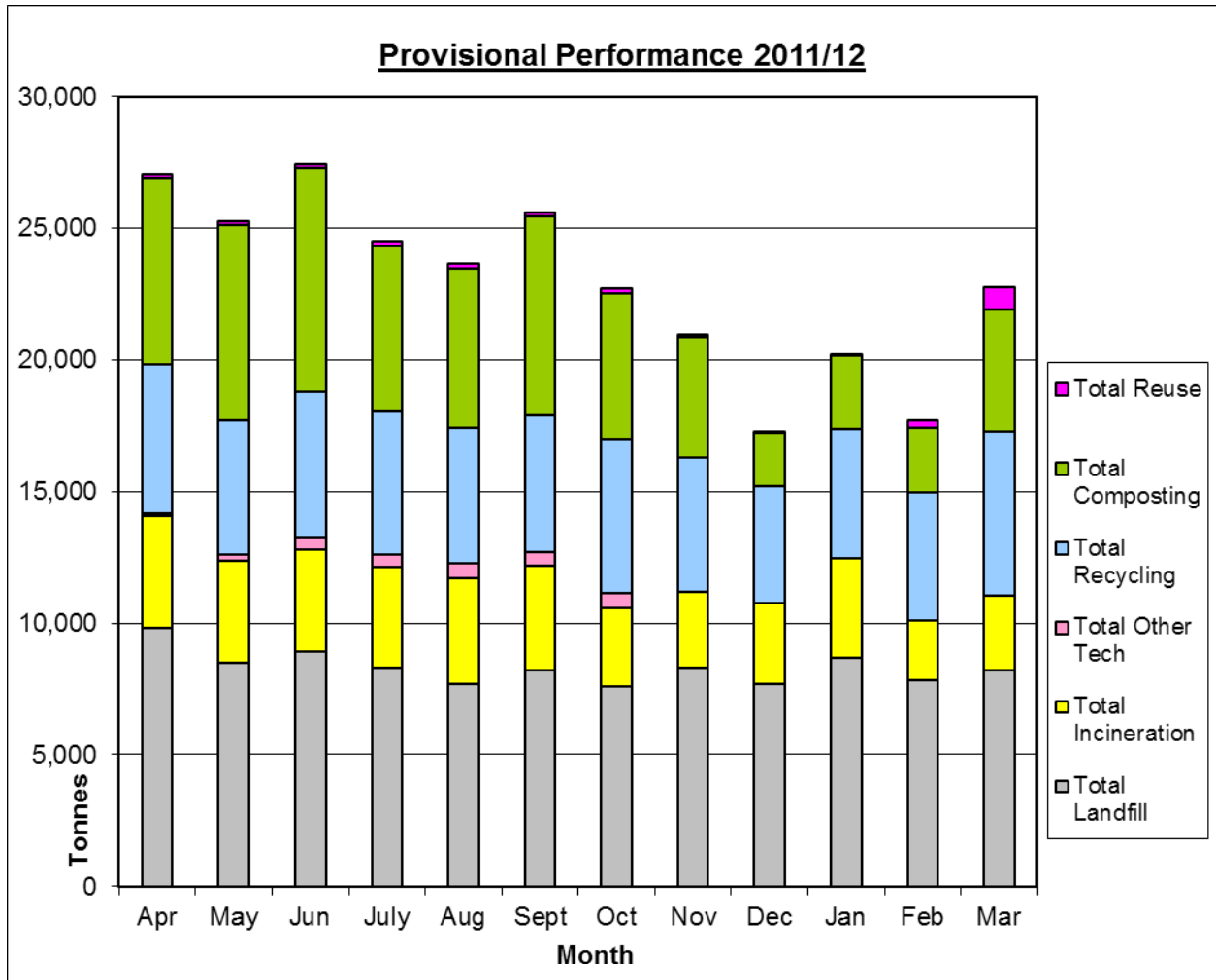
3.0 Estimated Provisional Performance

	Q4 2010/2011	Q4 2011/2012	Change
Recycling/Reuse Rate	17,192 tonnes	17,313 tonnes	☺ 121 tonnes up
	25.9%	27.9%	☺ 2% up
Composting Rate	11,668 tonnes	9,853 tonnes	X 1,815 tonnes down
	17.6%	15.9%	X 1.7% down
Recycling, Composting and Reuse Rate	28,946 tonnes	27,166 tonnes	X 1,780 tonnes down
	43.7%	43.8%	☺ 0.1% up
Landfill Rate	23,055 tonnes	25,963 tonnes	X 2,908 tonnes up
	34.8%	41.8%	X 7.8% up
Energy from Waste	14,727 tonnes	8,906 tonnes	X 5,821 tonnes down
	22.1%	14.4%	X 7.7% down
Total Municipal Waste	66,728 tonnes	62,035 tonnes	☺ 4693 tonnes down
			☺ 7% down

4.0 Comparison of Yearly Figures 2010/11 to 2011/12

	2010/11 Year	2011/12 Year	Change
Recycling/Reuse Rate	64,945 tonnes	66,712 tonnes	☺ 1,767 tonnes up
	22.9%	25.2%	☺ 2.3% up
Composting Rate	67,434 tonnes	59,682 tonnes	X 7,752 tonnes down
	23.8%	22.4%	X 1.4% down
Recycling, Composting and Reuse Rate	132,379 tonnes	126,394 tonnes	X 5,985 tonnes down
	46.8%	47.6%	☺ 0.8% up
Landfill Rate	95,741 tonnes	97,092 tonnes	X 1,351 tonnes up
	33.7%	36.4%	X 2.7% up
Energy from Waste	54,674 tonnes	42,563 tonnes	X 12,111 tonnes down
	19.3%	16.0%	X 3.3% down
Total Municipal Waste	282,794 tonnes	266,049 tonnes	☺ 16,745 tonnes down
			☺ 5.9% down

NB: District recycling rates are taken from claimed recycling credits. Last year's figures are taken from Waste Data Flow. All other figures are taken from Warwickshire County Council in-house records and, at the publication of this report, are considered **provisional estimates**.



5.0 District Provisional Performance – Household Waste

Note: Figures are from the Waste Management System and not Waste Data Flow therefore WCA reporting differences will exist.

	North Warwickshire		Nuneaton & Bedworth		Rugby		Stratford		Warwick	
	Year 2010/11	Year 2011/12	Year 2010/11	Year 2011/12	Year 2010/11	Year 2011/12	Year 2010/11	Year 2011/12	Year 2010/11	Year 2011/12
Recycling Rate	3,325 tonnes	3,643 tonnes	8,588 tonnes	8,789 tonnes	10,621 tonnes	10,158 tonnes	14,777 tonnes	14,040 tonnes	10,960 tonnes	10,982 tonnes
	12%	14%	16%	17%	26%	25%	27%	27%	22%	23%
Composting Rate	5,131 tonnes	4,565 tonnes	8,317 tonnes	8,622 tonnes	9,973 tonnes	9,494 tonnes	17,380 tonnes	15,376 tonnes	13,626 tonnes	13,004 tonnes
	19%	18%	16%	16%	25%	24%	32%	30%	27%	26%
Recycling, Composting and Reuse Rate	8,456 tonnes	8,208 tonnes	16,905 tonnes	17,411 tonnes	20,598 tonnes	19,655 tonnes	32,157 tonnes	29,418 tonnes	24,586 tonnes	23,986 tonnes
	31%	32%	32%	34%	51%	49%	60%	57%	49%	49%
Residual	18,556 tonnes	17,670 tonnes	35,788 tonnes	34,325 tonnes	19,743 tonnes	20,368 tonnes	21,848 tonnes	21,956 tonnes	25,500 tonnes	25,008 tonnes
	69%	68%	68%	66%	49%	51%	40%	43%	51%	51%
Total	27,012 tonnes	25,878 tonnes	52,693 tonnes	51,736 tonnes	40,336 tonnes	40,023 tonnes	54,005 tonnes	51,374 tonnes	50,086 tonnes	48,994 tonnes

	Name	Contact Information
Report Author	Nav Rai	navrai@warwickshire.gov.uk Tel: 01926 418064
Head of Service	Louise Wall	louisewall@warwickshire.gov.uk
Strategic Director	Monica Fogarty	monicafogarty@warwickshire.gov.uk
Portfolio Holder	Cllr Alan Cockburn	cllrcockburn@warwickshire.gov.uk